



# GAT MONTHLY MEMBERSHIP PROGRESS REPORT

Results as of: 4/30/2023

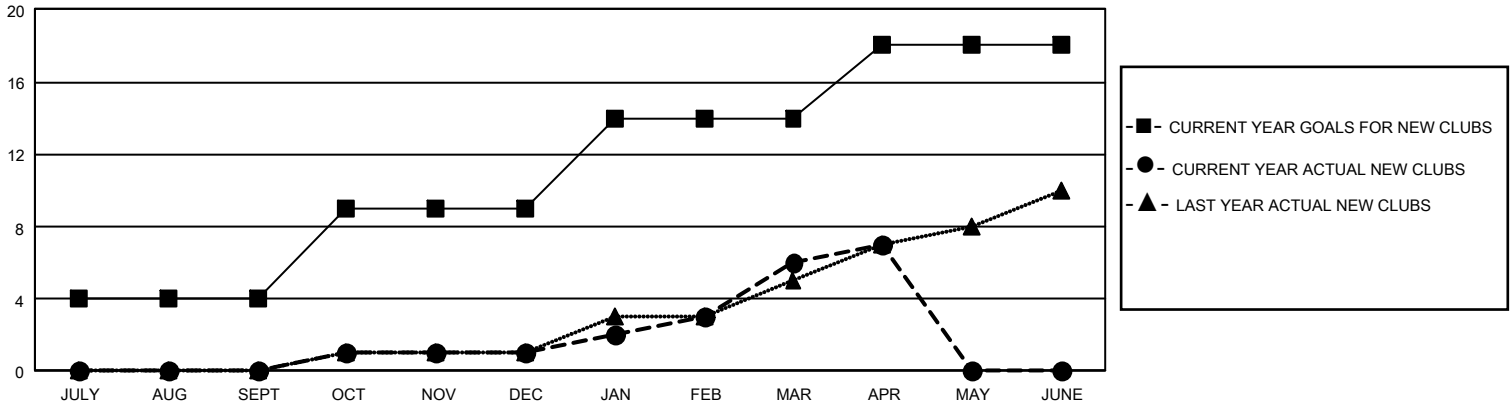
## GMT Constitutional Area 5 - J, Group H

REPORT DOES NOT INCLUDE CLUBS IN UNDISTRICTED AREAS.

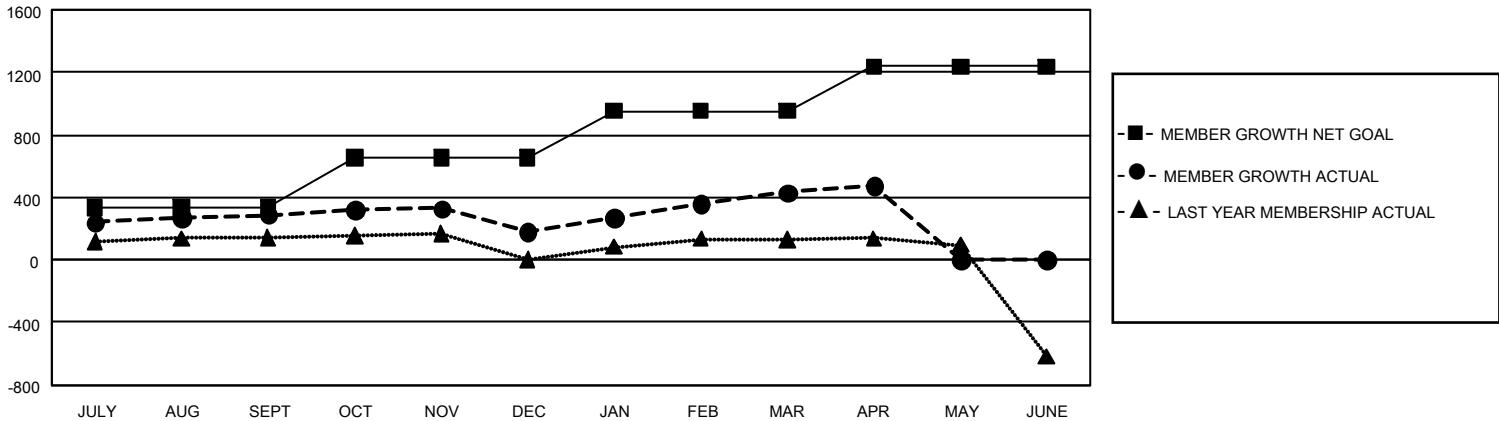
Clubs			
RESULTS FOR 2022-2023			
QUARTER	NEW CLUB GOAL	NEW CLUBS	DROPPED CLUBS
JULY/AUG/SEPT	12	0	1
OCT/NOV/DEC	15	1	0
JAN/FEB/MAR	15	5	0
APR/MAY/JUNE	12	1	0

Members			
RESULTS FOR 2022-2023			
QUARTER	MEMBER GROWTH NET GOAL	MEMBER GROWTH ACTUAL	DROPPED MEMBERS ACTUAL (including transfers)
JULY/AUG/SEPT	334	616	289
OCT/NOV/DEC	320	249	352
JAN/FEB/MAR	300	542	286
APR/MAY/JUNE	285	138	88

GOALS AND ACTUAL NEW CLUBS CUMULATIVE



GOALS AND ACTUAL MEMBERS CUMULATIVE



DROPPED CLUBS: 1	445 CLUBS OF 686 ADDED 1 OR MORE NEW MEMBERS	<u>GENDER DISTRIBUTION</u>	
<u>DROPPED MEMBERS</u>		MALE	17,589 (74.58%)
DECEASED	161	FEMALE	5,995 (25.42%)
CLUB CANCELLED	0	NON BINARY	0 (0.00%)
OTHER	854	PREFER NOT TO ANSWER	0 (0.00%)
TOTAL	1,015	TOTAL FAMILY UNIT MEMBERS	8,899
	<a href="#">CLICK HERE FOR CUMULATIVE MEMBERSHIP DATA</a>	FAMILY MEMBERS PAYING HALF DUES	4,932